

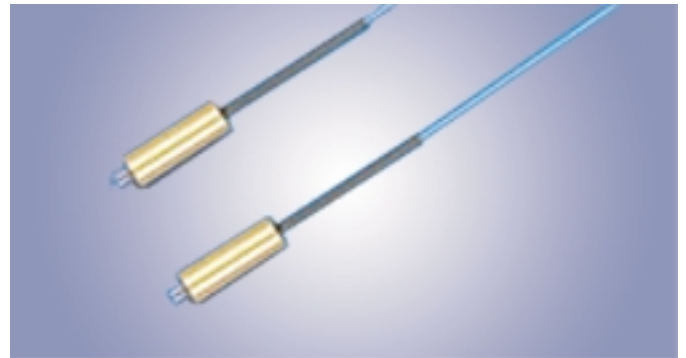


Opto-Link
Corporation Ltd

Fiber Optic Collimators

(Working Distance: 50mm & 100mm)

Fiber Optic Collimator is designed to focus the light exiting a fiber to a specific beam diameter or spot size. It can be used in various active and passive optical components including fiber optic sensors, Erbium-doped fiber amplifiers (EDFAs), dense wavelength division multiplexer (DWDM), circulators and isolators.



Types

- Single-Mode Fiber Collimators
- Polarization Maintaining Fiber Collimators

Applications

- EDFAs, DWDM
- Fiber Optic Sensors
- Photonic Switches
- Isolators
- Circulators
- Couplers
- Test & Measurement System

Features

- Low Insertion Loss
- Low Polarization Dependence Loss
- High Extinction Ratio (for PM Collimators)
- Excellent Return Loss
- Wide Bandwidth
- Long Working Distance
- Environmentally Stable



Opto-Link
Corporation Ltd

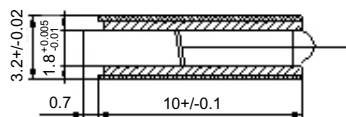
SPECIFICATIONS

Polarization Maintaining Fiber Collimators

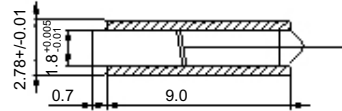
Parameter	Values		Units
Central Wavelength	1310, 1550 or Specify		nm
Spectral Bandwidth	+/- 30	+/- 20	nm
Working Distance	50	100	mm
Insertion Loss	0.25(Typ), 0.3(Max)	0.25(Typ), 0.3(Max)	dB
Extinction Ratio	25(Typ), 22(Min)		dB
Min. Return Loss	60		dB
Handling Power	300		mW
Tensile Load	5		N
Fiber Type	PM Panda Fiber		--
Operating Temperature	-5 to +70		°C
Storage Temperature	-40 to +85		°C

*Above specifications are for device without connectors.

PACKAGE DIMENSIONS



Metal Holder (Units in mm)



Glass Tube (Units in mm)

ORDERING CODES

Polarization Maintaining Fiber Collimators:

OLCOL - P - [] - [] - [] - [] - []

Fiber Number	Code
Single Fiber	S
Dual Fiber	D

Wavelength	Code
1310 nm	131
1550 nm	155
Specify	XX

Fiber Diameter	Code
250 μm	25
900 μm	90

Working Distance	Code
50mm	50
100mm	100

Connector Type	Code
No Connector	NC
FC/UPC	FU
SC/UPC	SU
FC/APC	FA
SC/APC	SA
LC/UPC	LU
Others	XX

■ Opto-Link Corporation Ltd. reserves the right to make changes to the products described herein without notice.

COPYRIGHT © 2002-2006 Opto-Link Corporation Ltd.

Tel: +852 2480-6106 Fax: +852 2480-1621 Email: contact@optolinkcorp.com Website: www.optolinkcorp.com